

Description

This Vibration Sensor use the SW-18015P from MEC to measure the vibration. It can trigger from any angle, and often used for flex, touch, vibration and shock measurements.

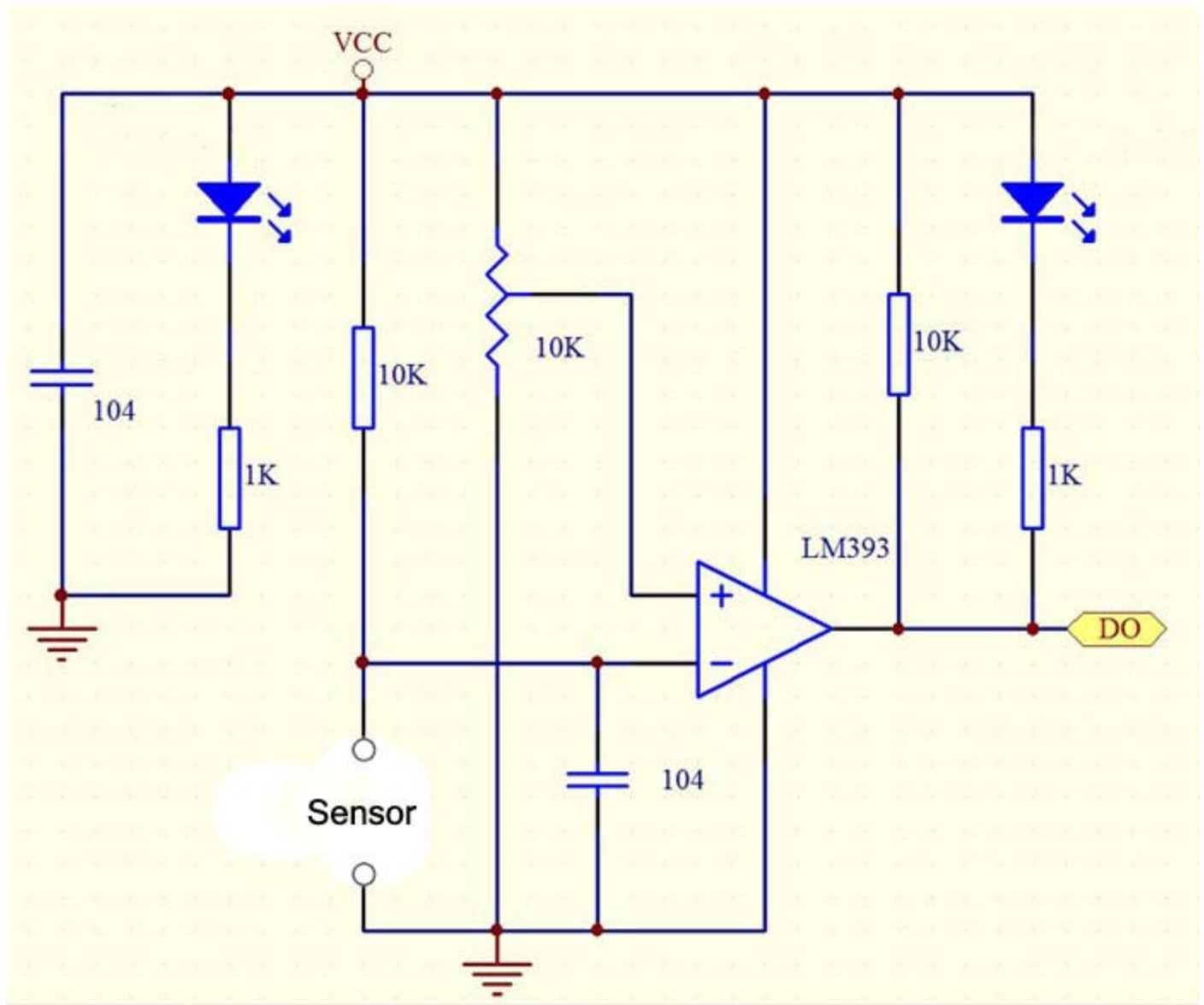
There is an on-board potentiometer to adjust the threshold of vibration. It outputs logic HIGH when this module not triggered while logic LOW when triggered.

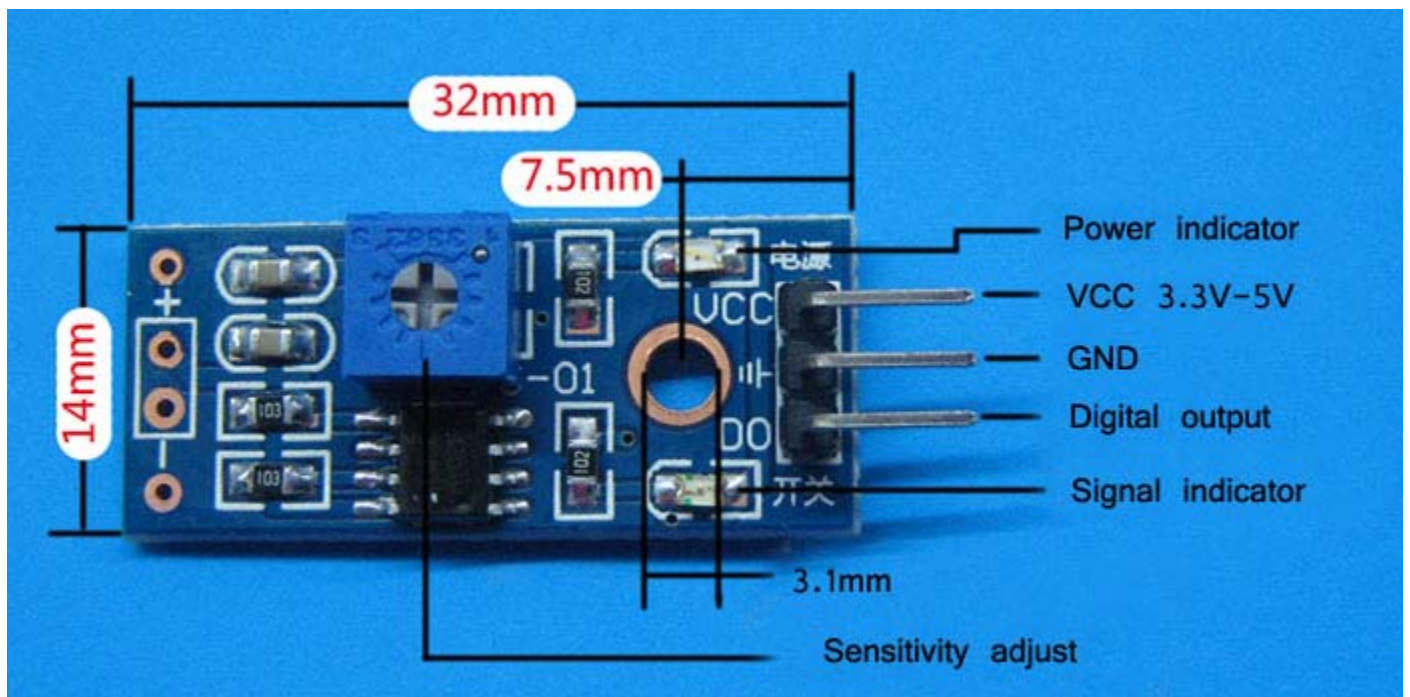
Application Idea

Automobile alarm.
Movement detection.
Vibration detecting Applications

Features

The default state of the switch is open
Digital output
Supply voltage: 3.3V-5V
On-board indicator LED to show the results
On-board LM393 chip
Dimension: 3.2cm x 1.4cm





| Model | A | B | C | D | E | F | Sensitivity | Encapsulation |
|-----------|------|----|---|---|------|-------|------------------|---------------|
| SW-18015 | ø4.5 | 10 | 8 | * | S0.5 | ø0.15 | High sensitivity | Unsealed |
| SW-18015P | ø4.8 | 11 | 8 | * | S0.5 | ø0.15 | High sensitivity | Sealed |
| SW-18020 | ø4.5 | 10 | 8 | * | S0.5 | ø0.20 | standard | Unsealed |
| SW-18020P | ø4.8 | 11 | 8 | * | S0.5 | ø0.20 | standard | Sealed |
| SW-18025 | ø4.5 | 10 | 8 | * | S0.5 | ø0.25 | dull | Unsealed |
| SW-18025P | ø4.8 | 11 | 8 | * | S0.5 | ø0.25 | dull | Sealed |
| SW-18030 | ø4.5 | 10 | 8 | * | S0.5 | ø0.30 | duller | Unsealed |
| SW-18030P | ø4.8 | 11 | 8 | * | S0.5 | ø0.30 | duller | Sealed |

*Specification "D" size for 8-13mm, can according to the customer requirement.

