

# RS485 Shield V2.1 for Arduino

From LinkSprite Playground

## Contents

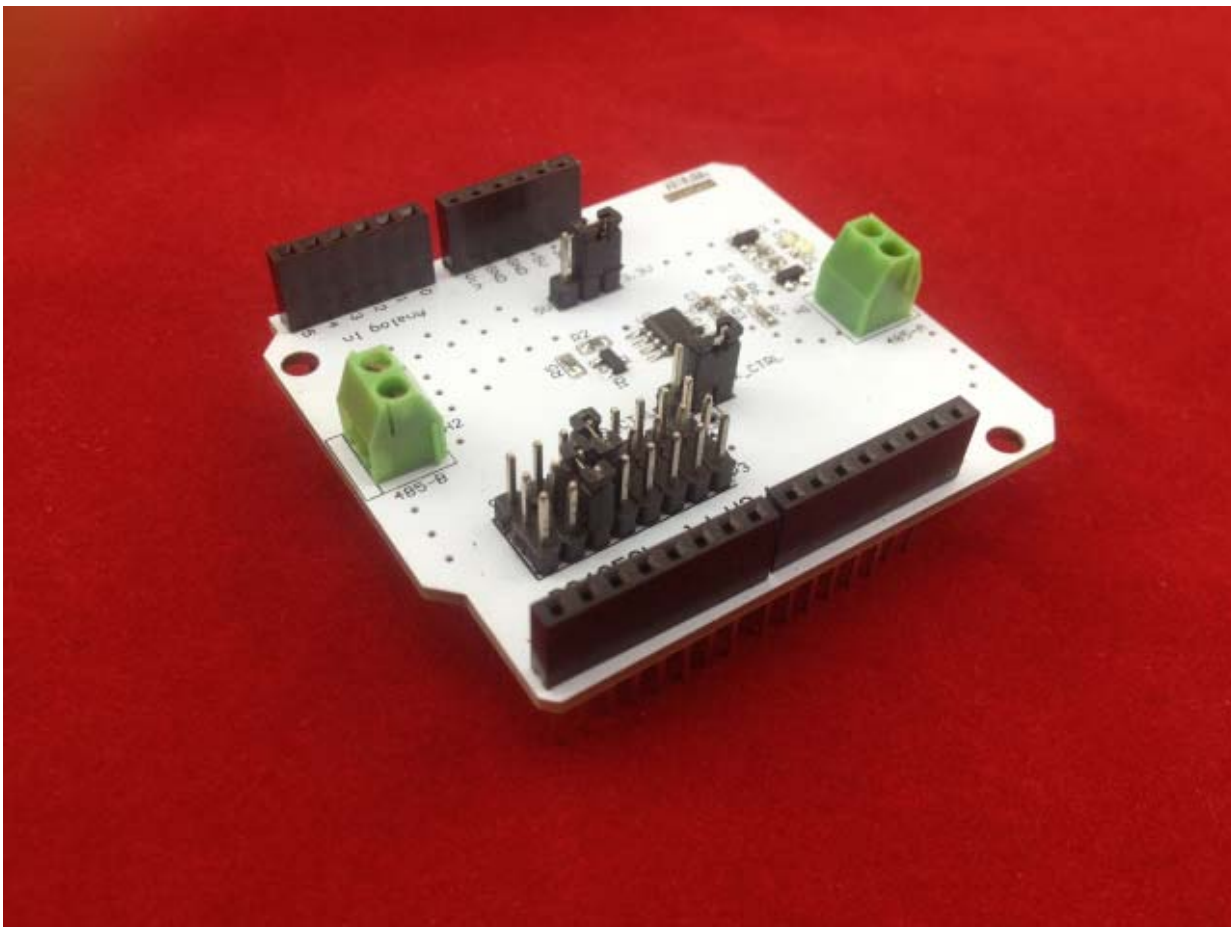
- 1 Introduction
- 2 Schematic
- 3 Usage
- 4 Resouces

## Introduction

RS485 is a standard communication port for field bus. Arduino only has a USB port and a TTL UART interface. In order to talk to a device that has RS485 bus, we can add a RS485 port to Arduino using this handy RS485 shield.

- Use this handy Arduino RS485 shield to add an RS485 port to your Arduino
- Comes fully assembled with shield stacking headers

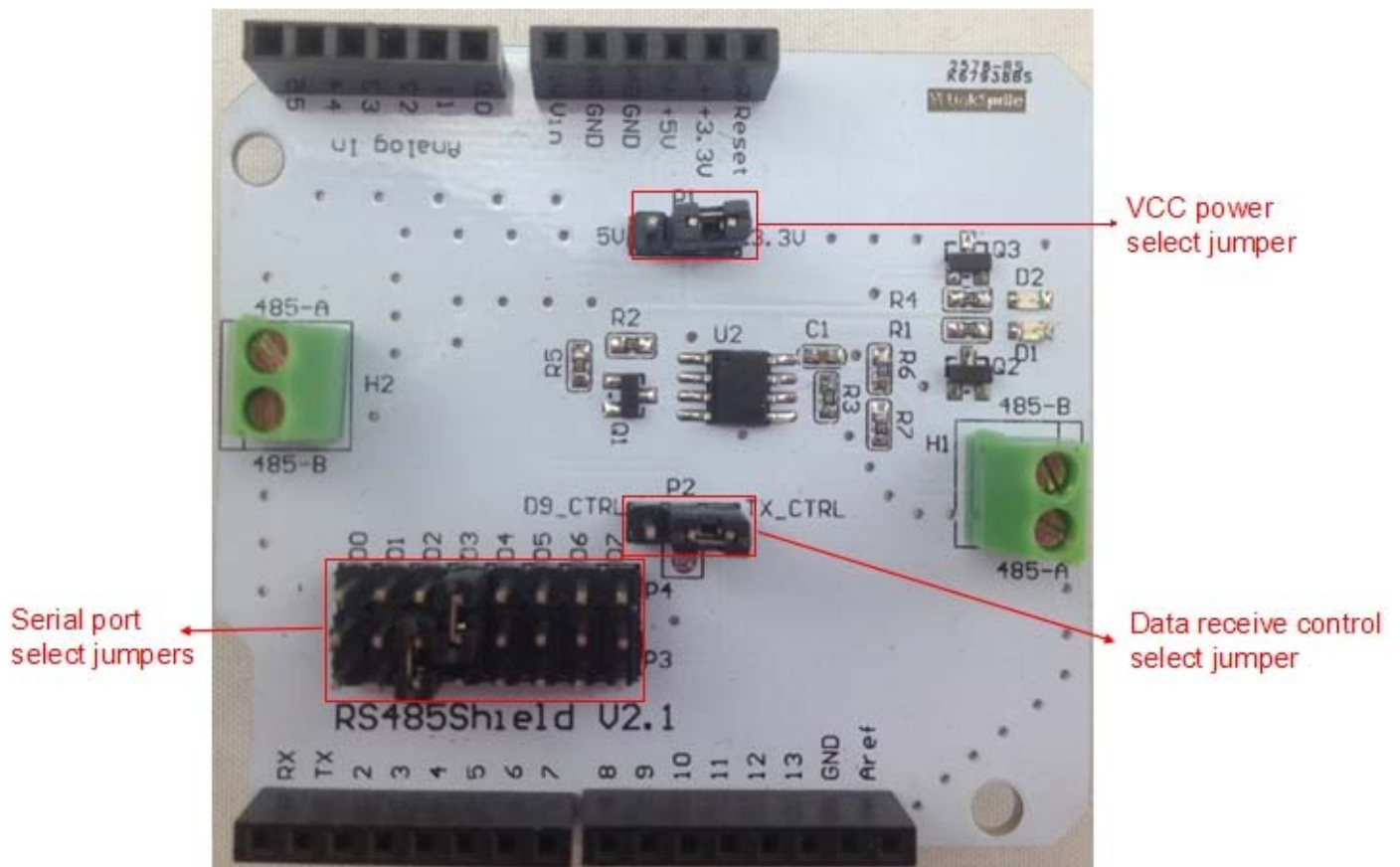
Compared to RS485 Shield V1, you can choose two pins from Arduino D0 to D7 as Software Serial Ports to communicate with RS485 Shield (D0 and D1 is Hardware Serial Port).



## Schematic

- Schematic (<https://s3.amazonaws.com/linksprite/Shields/RS485/RS485shield-v2.pdf>)

## Usage



## Resouces

- Tutorial (<http://learn.linksprite.com/arduino/shields/tuotorial-of-using-rs485-shield-v2-on-arduino/>)

Retrieved from "[http://linksprite.com/wiki/index.php5?title=RS485\\_Shield\\_V2.1\\_for\\_Arduino&oldid=4695](http://linksprite.com/wiki/index.php5?title=RS485_Shield_V2.1_for_Arduino&oldid=4695)"

- 
- This page was last modified on 6 July 2014, at 23:21.
  - This page has been accessed 10,878 times.